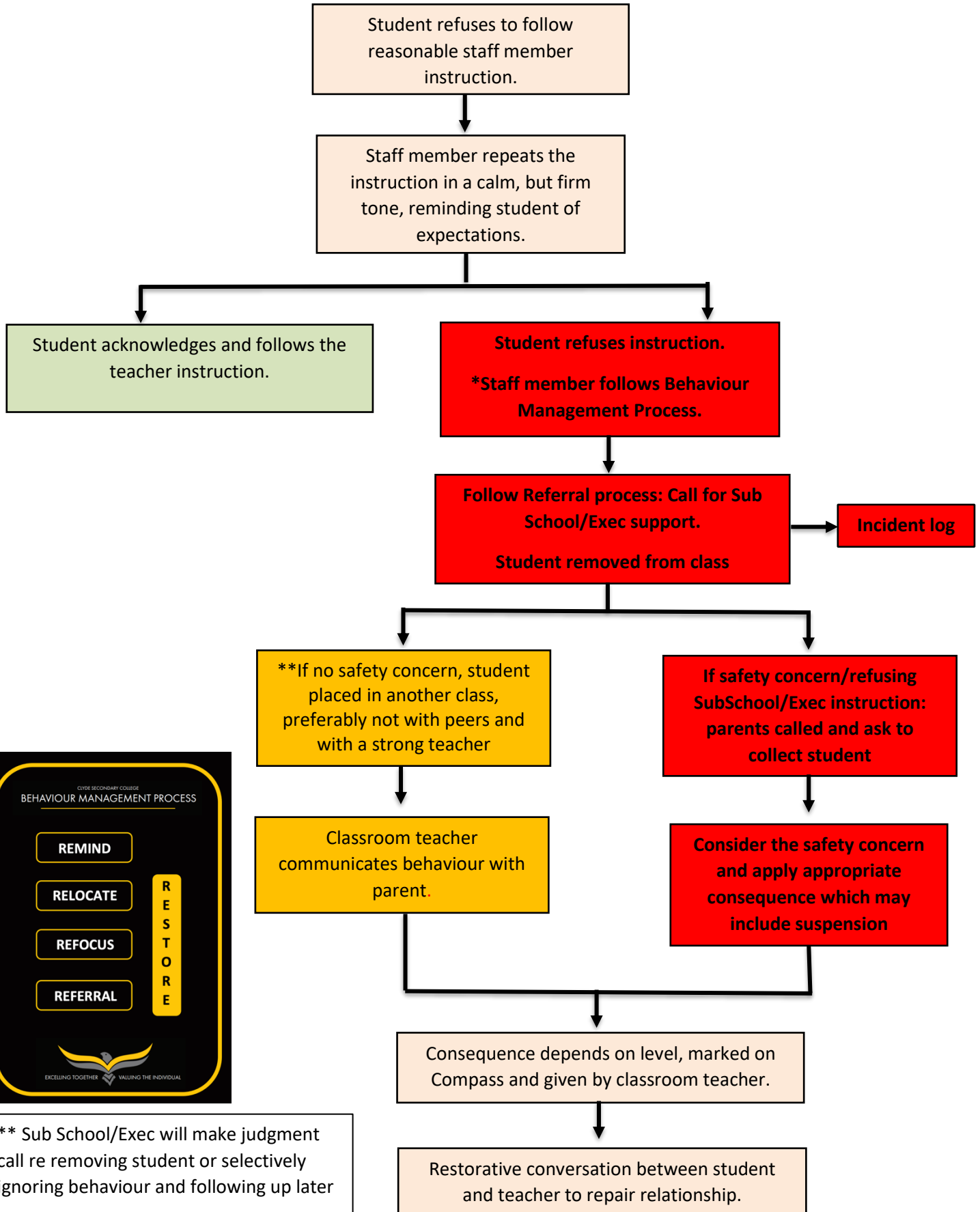


## Not Following Teacher Instructions - Flowchart

### Issue

Clyde Secondary College expectations outlines that students follow reasonable instruction of staff members. In the event a student refuses a reasonable staff member instruction, the following process should be followed:



**\* BEHAVIOUR MANAGEMENT PROCESS**

CLYDE SECONDARY COLLEGE

REMIND

RELOCATE

REFOCUS

REFERRAL

RESTORE

EXCELLING TOGETHER VALUING THE INDIVIDUAL

\*\* Sub School/Exec will make judgment call re removing student or selectively ignoring behaviour and following up later